

# Welcome to the Library newsletter



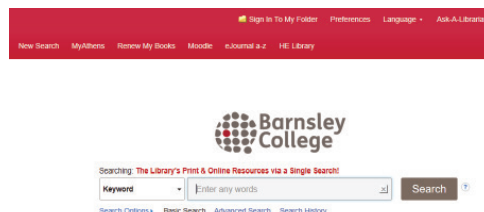
## IBRARY

## IRCULATION

It's back! Make yourself a cuppa and take five minutes of your time to get reacquainted with the latest from the Learning Curve and HE Library. Here you'll find information about the latest apps, programs and initiatives to help you with your studies, as well as inspiration to help you decide what to read next with your next visit among the bookshelves.

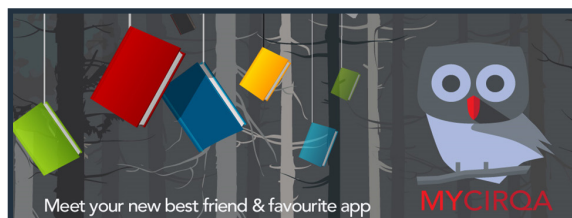
### Discover More with Discovery...

It can be hard to know where to start when you're given a new assignment. Do you go to the catalogue/library and find some books? Or is Google your first point of call? Well now the Library has made it even easier to dive into research and find the results you want: EBSCO **DISCOVERY**. Search *ALL* of our Resources with *ONE* search. Get easy, direct access to the full text, save your results for later and easily reference what you find using the built in referencing app. Our NEW searching tool, EBSCO **DISCOVERY** is easy to use and can be found via links on [MyDay](#), [OpenAthens](#) and the [HE Library Website](#). Look out for the displays in the Libraries, pick up the free information leaflets or speak to a member of staff at the Library Helpdesk for more information.



### Read with Pride

This month we are looking at LGBT+ history month with a theme of Poetry, Prose and Plays. LGBT History Month was first established in the UK in 2005. It's a celebration that encourages further education into LGBT+ issues, the history of the gay rights movement, and promotes an overall safer and more inclusive society where the varied spectrum of sexuality and gender is universally accepted and spoken about openly. More information can be found at <https://lgbtplushistorymonth.co.uk> and there are some fantastic displays to be found in the LRC and HE Libraries including works from some inspirational LGBT authors for you to borrow.



### Research, renew, reserve on the go...

The Library Catalogue has gone MOBILE. You can now find books, check availability, reserve and manage items you already have on loan with the **NEW Heritage MYCIRQA App**. Simply download the app from your app store and select Barnsley College as your library. Your username is your student number and password/pin can be obtained from the Library helpdesk so please contact us to get started!

**Please get in touch if you have any questions:**  
Email: [heritagelrc@barnsley.ac.uk](mailto:heritagelrc@barnsley.ac.uk)  
Tel: 01226 216 885/450

## STUDY SKILLS

One to One appointments with  
Cherie and Helen  
01226 216 884  
[studyskills@barnsley.ac.uk](mailto:studyskills@barnsley.ac.uk)